

Central Charlotte County Drainage District

Supplement to Water Control Plan

The purpose of this instrument is to provide supplemental information with respect to the Water Control Plan which was presented to the Southwest Florida Water Management District having an effective date of October 1, 2000. The comments made by the Southwest Florida Water Management District under cover of letter dated August 23, 2000, are also addressed in this Supplement.

1. The District has been in communication with the Charlotte County Public Works Department regarding the maintenance, ownership and management of the outfall canal under State Road 74. While the County maintains the ditches along State Road 74 at the location of the Central Charlotte County Drainage District, no confirmation concerning the maintenance responsibilities for the outfall canal have been obtained.

2. The Central Charlotte County Drainage District was created by Order of Circuit Court on January 6, 1966. A bond issue was passed, and canals and drainage facilities were constructed according to the engineering drawings prepared for the District. Recent examinations of the Public Records have failed to disclose, however, any recorded easements, deeds, or taking orders regarding the canals or access to the canals. The District, like Charlotte County in an adjoining municipal service benefit unit, has taken the position prescriptive rights have been established with respect to the maintenance of the ditches and canals. Temporary construction and access easements and consents are requested from property owners in the event necessary to enter portions of the canal system to clean same.

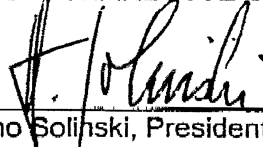
3. At the Meeting of Supervisors which was held on January 26, 2001, the Supervisors proposed for consideration by the Landowners a plan to maintain the primary canals and ditches located in the District. Attached hereto as Exhibit "A" is a drawing outlining in red the main ditches to be maintained by the District.

The District is in the process of obtaining bids for the cost of cleaning the noted canals and ditches. The Supervisors will then adopt a maintenance schedule for the maintenance of the said ditches and canals.

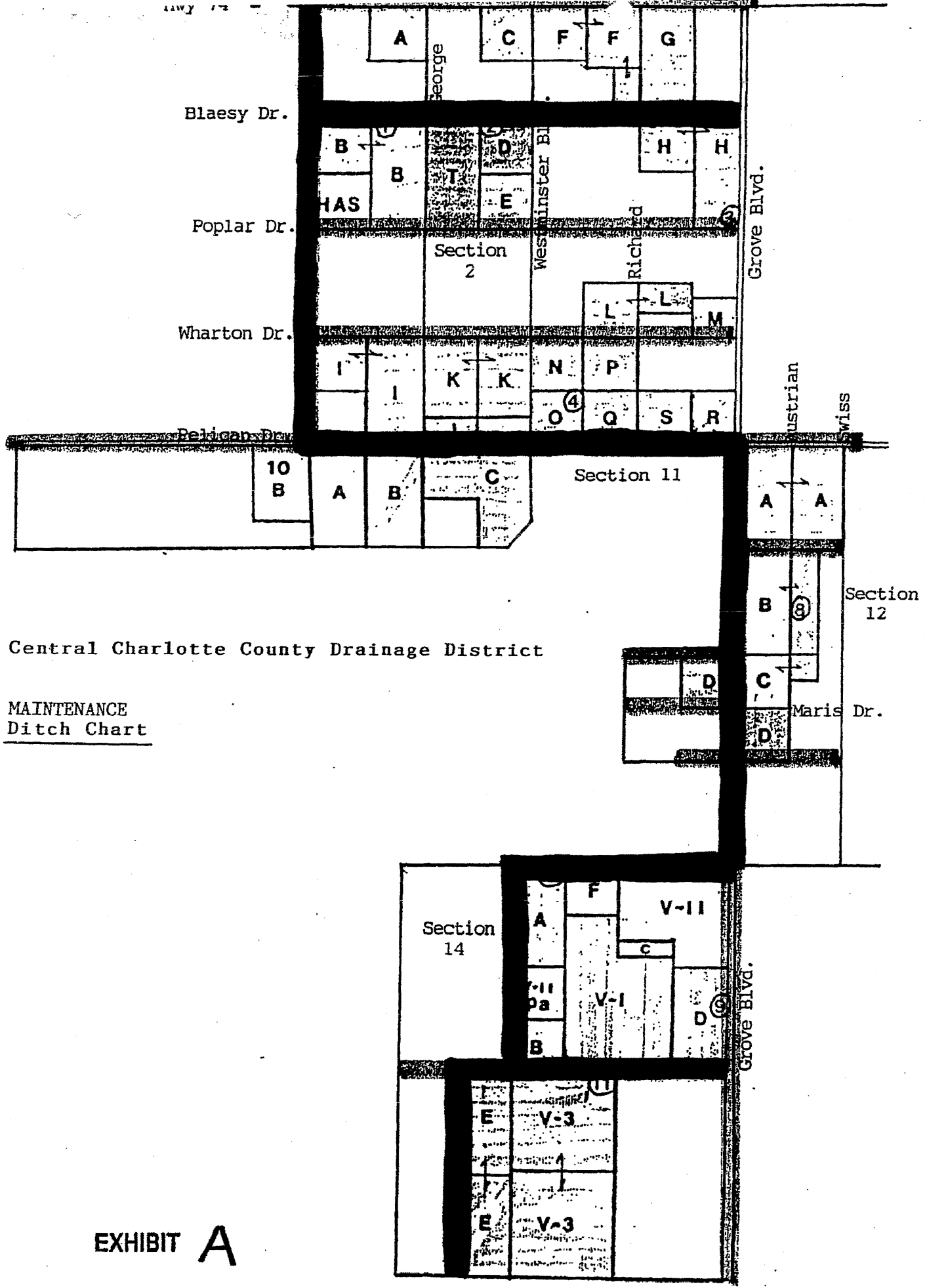
The income of the District is also being reconsidered. Due to the relatively high administrative costs over the past few years, very little funding has been made to maintenance projects. As a result, the Supervisors are recommending the increase in the annual acreage assessment from \$12.00 per acre to \$16.00 per acre. The said additional funds collected will be applied to canal and ditch maintenance. For information, the audit report of the financial statements for fiscal year ending September 30, 2000, is attached to this Supplement as Exhibit "B".

For foregoing Supplement is hereby submitted effective this 19th day of February, 2001.

CENTRAL CHARLOTTE COUNTY DRAINAGE DISTRICT



H. Mano Solinski, President



Blaesy Dr.

Poplar Dr.

Wharton Dr.

Pelican Dr.

George

Westminster Bl

Richard

Grove Blvd.

Austrian

Swiss

Section 12

Maris Dr.

Grove Blvd.

Section 14

V-II

V-I

B

E

E

V-3

V-3

Central Charlotte County Drainage District

MAINTENANCE
Ditch Chart

EXHIBIT A